



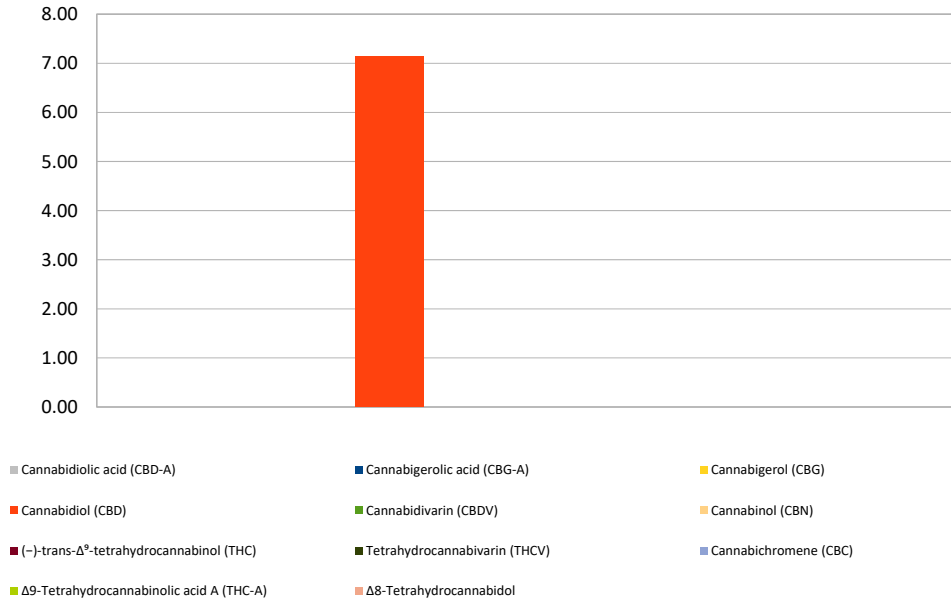
Cannabinoid Profile

Customer: DMFW LLC
Customer Sample ID: Pet Drops Small Breed 200m
Laboratory Number: 202002-0673 **Extraction**
Technician: CB
Analytical Chemist: GB

Extraction Date(s):	Analysis Date(s)
7/22/2023	7/22/2023

Cannabinoid (HPLC)		Results	
	LOD (mg/g)	Percent	mg/g
Δ8-Tetrahydrocannabinol	<0.2		
Cannabidiolic acid (CBD-A)	<0.2		
Cannabigerolic acid (CBG-A)	<0.2		
Cannabigerol (CBG)	<0.2		
Cannabidiol (CBD)		0.71%	7.13
Cannabidivarin (CBDV)	<0.2		
Cannabinol (CBN)	<0.2		
(-)-trans-Δ ⁹ -tetrahydrocannabinol (THC)	<0.2		
Tetrahydrocannabivarin (THCV)	<0.2		
Cannabichromene (CBC)	<0.2		
Δ9-Tetrahydrocannabinolic acid A (THC-A)	<0.2		
Cannabinoids Total		Percent	mg/g
Max Active THC		0.00%	0.00
Max Active CBD		0.71%	7.13
T. Active Cannabinoids		0.71%	7.13
Total Cannabinoids		0.71%	7.13
Ratios			
NA CBD to THC		0.00 :1 THC to CBD	

Cannabinoid (mg/g)



Altitude Consulting, LLC utilizes NIST traceable Reference Standards and Certified Reference Material to calibrate analytical instruments along with proven analytical methods. The methods are applied in the most ethical manner following good laboratory practice guidelines. The results of this report are based solely on the sample submitted and cannot be reproduced.

This report expires 30 days after analysis date.